

Centralized Management of APCON Visibility and Security Solutions

Titan

Multi-Switch Management Software
for IntellaView and IntellaFlex XR



FEATURES

- Manage all APCON switches from a single device
- View status and alerts
- Configure dashboard for prioritized statistics
- Monitor tool utilization
- Access multiple APCON devices with single login
- Generate and export a variety of reports
- Schedule firmware updates and backups

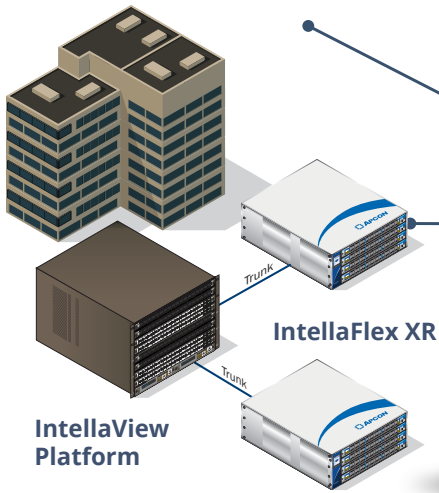
Titan multi-switch management software provides centralized operation of APCON network visibility solutions. A secured HTML5-based graphical user interface (GUI) enables authorized users single login access to the entire monitoring network. The easy-to-use graphical interface provides network-wide visibility of status, alarms, events, and statistics dashboards as well as scheduling of configuration backups or firmware updates.

With the support of REST API interface, Titan allows customers to easily develop custom applications, allowing integration and interfacing with all IntellaView and IntellaFlex XR network visibility switches.

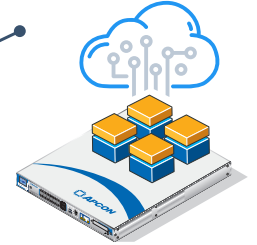
Quickly access any device on the network by selecting it on Titan's Global View, providing IntellaView and IntellaFlex WebXR features directly on a tab within Titan.

APCON VISIBILITY SOLUTIONS

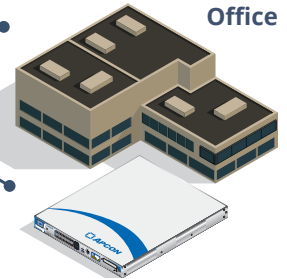
On-Premises Datacenter



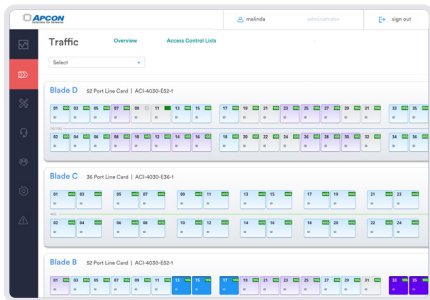
IntellaTap-VM (Private Cloud)



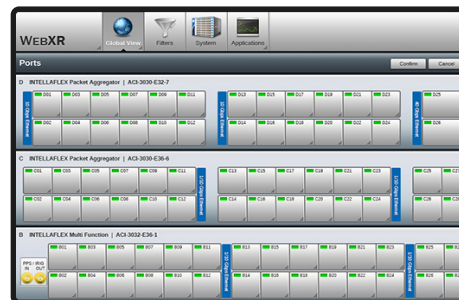
Branch Office



IntellaView Software



WebXR



IntellaStore II+

Titan

Provides visibility of all **IntellaView**, **IntellaFlex XR**, and **IntellaStore II+** systems regardless of size and configuration - from branch office to large datacenter, and lights out facility to co-locations - and unified virtual network and physical layer monitoring

GLOBAL NETWORK

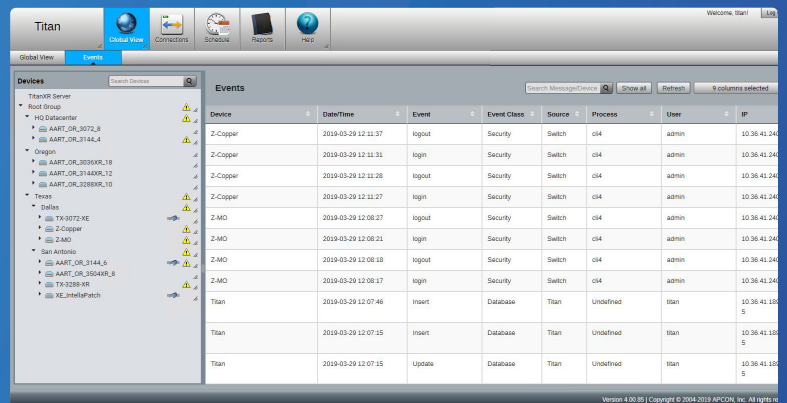
Titan displays the APCON network visibility fabric, including status and events, providing a visual confirmation of the operational status of the entire network.

GLOBAL VIEW

Titan lists the monitoring network switches in a format that gives a quick visual indication of status, including alerts, of every switch in the network. WebXR GUI can easily be opened in a tab to access the entire switch feature set.

EVENTS SUMMARY

View a summary of all events within the APCON network. This customizable summary can be sorted by several fields including date/time, event type, IP address, and system name to quickly find and resolve monitoring issues.



View a summary of all events within the APCON network

FULL GUI ACCESS

Titan provides the ability to manage the entire APCON visibility infrastructure from a single screen and make device changes instantly. The more switches you have to manage, the more time you will save using Titan.

EASY SWITCH CONFIGURATION

With the Clone feature, users can copy the attributes of an existing switch and apply those attributes to multiple switches using a single Titan screen.

SIMPLIFY NEW FIRMWARE DEPLOYMENT

Eliminate potential delays and the complexity of synchronizing management and firmware version upgrades with full switch access directly within Titan.

EASY TO LEARN AND USE

Titan, IntellaView, and WebXR secured HTML5-based graphical user interfaces have a common look and feel, reducing training and increasing operational efficiency.

CUSTOMIZED DASHBOARDS

Create statistics dashboards for multiple switch ports to view utilization, trends, and traffic graphs over desired time intervals. In addition to tracking traffic from a key switch or router, dashboards make it easy to monitor the utilization and trending of critical traffic analysis tools.

SCHEDULE EVENTS

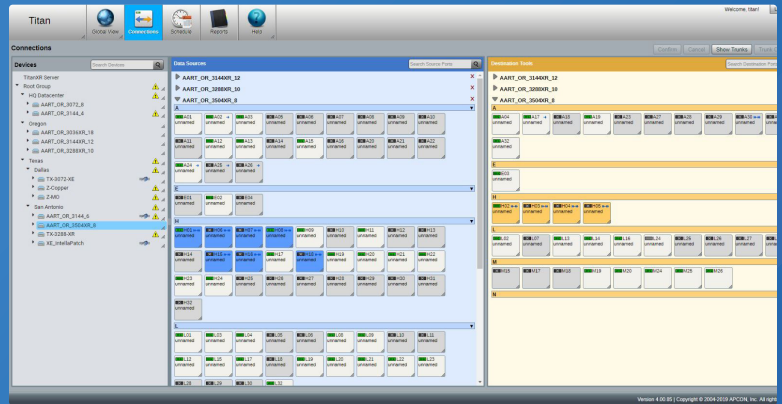
Titan and APCON switch backups, updates, and reports can be scheduled and viewed within Titan, simplifying routine maintenance across a large network. The schedule calendar provides a list of all scheduled events.

SYSTEM BACKUPS

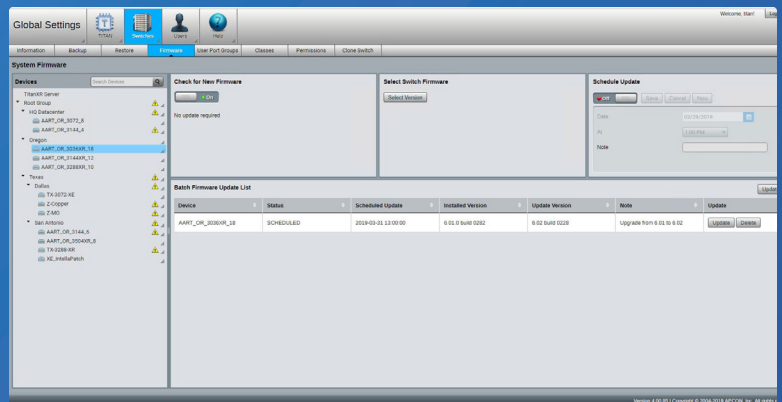
Schedule Titan and/or multiple switch backups immediately, daily, weekly, or monthly with storage of the last 10 backups for each device. Switch backups include configuration options of XML or CLI format and the optional backup of local user accounts.

FIRMWARE UPDATES

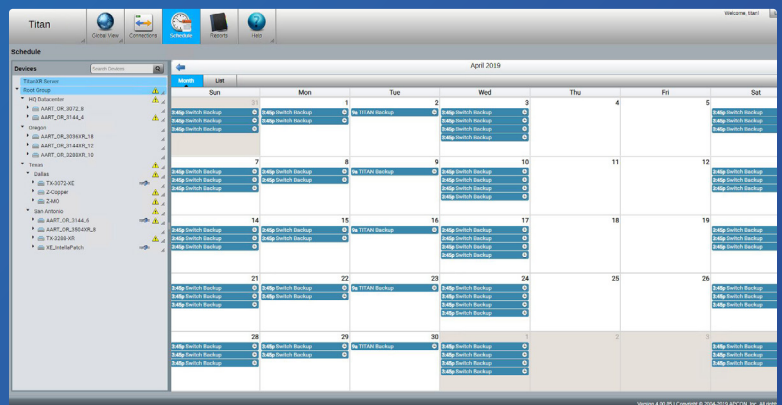
Titan makes it easy to view current firmware and update to the latest version. Schedule one or multiple switch updates during a maintenance window.



Centralized user management, control all switches from a single console



Easily view current firmware and update to the latest version with simple-to-navigate scheduling



With an intuitive, monthly calendar interface, users can view automated events and scripts for the network, switches, and blades

ENTERPRISE CLASS SECURITY

SINGLE LOGIN

Users can access all APCON devices by entering a username and password only once.

Titan combines the simplicity of single-user, multi-system access with enterprise-class security.

TACACS+ and RADIUS secure user administration is combined with AAA authentication, secure HTTPS/SSH transmission, and session time-out enforcement.

PERMISSION CONTROL

User permission control for administrator, advanced, operator, and guest users includes enable/disable features per user group for flexible permission control.

ACTIVITY LOGS

Titan tracks login, logout, failed attempts, and activity times logging the last 100 activity events for every user, enabling administrators to view current and recent user activity.

VIRTUALIZATION

VIRTUAL MONITORING CONFIGURATION

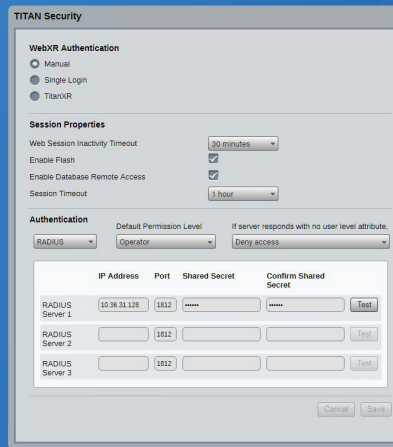
Titan enables easy administration of the IntellaTap-VM virtual network visibility solution. Authorized users have single-screen, point-and-click access for IntellaTap-VM virtual TAP configuration, virtual machine traffic status, and forwarding of virtual network traffic to on-premise performance monitoring and security tools.

REPORTS

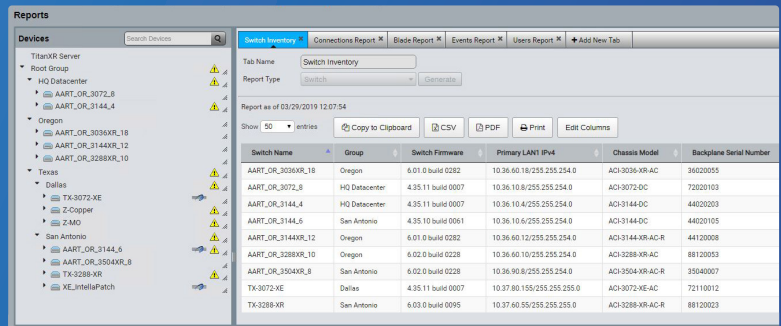
FLEXIBLE REPORT GENERATION

Titan offers the user the option to generate a variety of reports and to customize the report data fields. Report results can be displayed, printed, and/or exported to Excel or PDF file format. Report selections include:

- User Logins
- Switch Inventory
- Blade Inventory
- SFP Inventory
- Events
- Oversubscriptions
- Connections
- Port Groups
- Trunks



Combine the simplicity of single-user, multi-system access with enterprise-class security through TACACS+ and Radius



Titan offers options to generate a variety of reports and to customize the report data fields

System Support

Scalable to large enterprise network environments

Multiple IntellaView, IntellaFlex XR, and IntellaStore II+ switches

- IntellaView firmware v1.04.2 or higher
- IntellaFlex XR firmware v5.15.1 or higher
- IntellaPatch 3000 firmware v4.35.9 or higher
- IntellaStore II+ firmware v5.15.1 or higher
- EdgeSwitch firmware v2.3 or higher

Up to 100 users with 25 concurrent users

Stores 10,000 events and last 100 login details

Server Requirements

Xeon multi-core hyper-threading processor, 2.0GHz or greater

Minimum 32GB RAM and 2TB disk space

For Windows: Server 2012 and Server 2016

For Linux: CentOS v6.x and CentOS v7.x

Part Number

9100 Titan Management Software License