

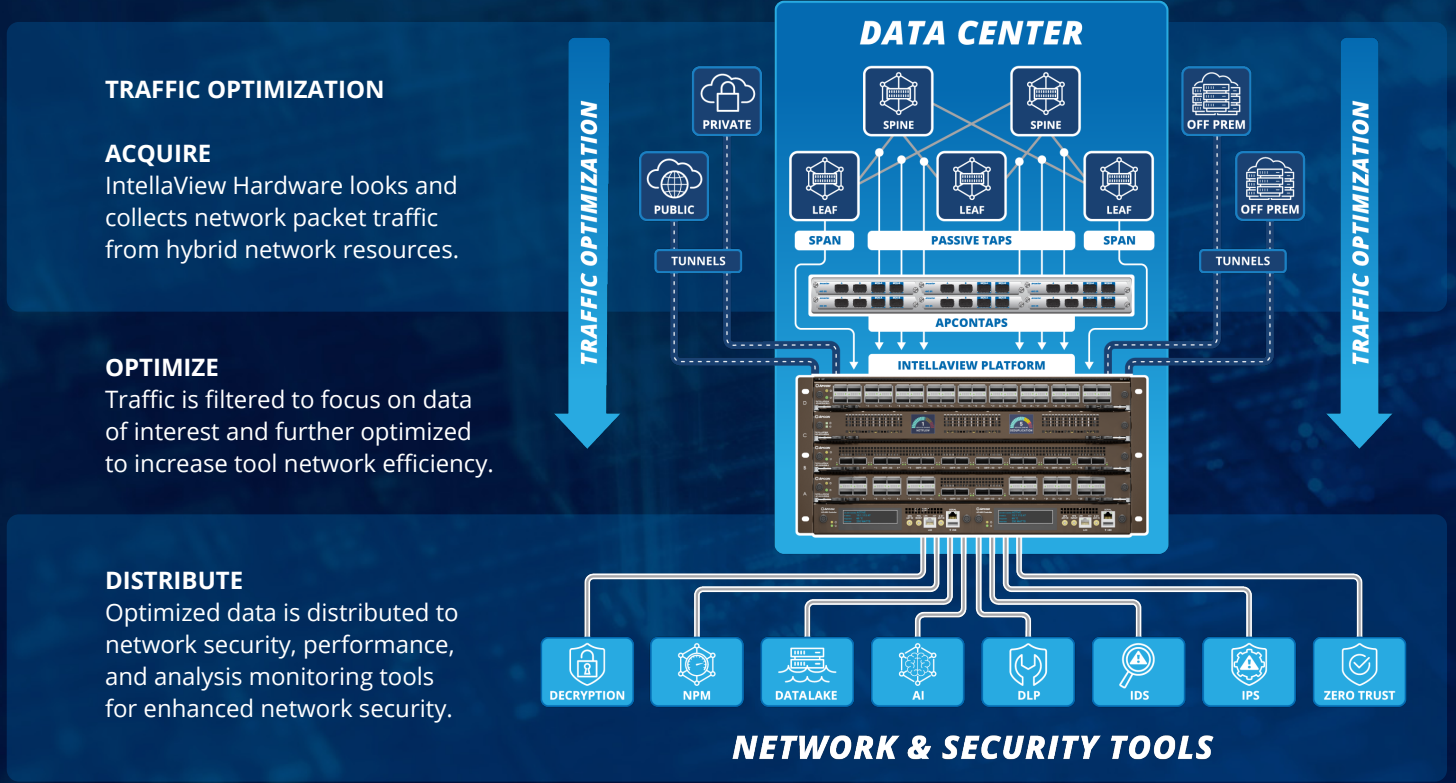
The IntellaView Platform

ADVANCED HARDWARE AND SOFTWARE SOLUTIONS FOR NETWORK VISIBILITY



APCON NETWORK VISIBILITY SOLUTIONS SIGNIFICANTLY INCREASE THE PROTECTIVE CAPABILITIES AND EFFECTIVENESS OF NETWORK SECURITY, ANALYTICS, AND PERFORMANCE MONITORING TOOLS.

The **IntellaView Platform** is an advanced network visibility solution comprised of hardware and software products. Everything works seamlessly together to enhance the stability and effectiveness of your network security, monitoring, and performance tools that keep your networks running safely and smoothly. Below is a diagram that displays how APCON products fit within the flow of network traffic and how we can help your network teams mitigate costly downtimes, hacks, and data leaks.



INTELLAVIEW CHASSIS

Blade-Customizable Chassis

The Intellaview platform includes three multi-slot chassis: the **ACI-4020-AC 3RU**, **ACI-4040-AC 5RU**, and **ACI-4080-AC 9RU** which all include the options for multiple controller cards and fabric cards. The two front-facing controller cards come with touchscreens and provide fail-over operation for uninterrupted continuity. Other product features include hot-swappable, load-sharing, redundant AC power and hot-swappable fan modules to support constant temperature and power consistency. These chassis can also be configured with up to six switch **fabric cards**, providing full mesh connectivity between the blades and offering a dramatic increase in bandwidth potential — up to five times more than previous-generation products. By installing more fabric cards, you gain more blade-to-blade traffic bandwidth.

The Intellaview platform also features a single-slot chassis, **ACI-4010-AC 1.5RU**, that is capable of utilizing any of the Intellaview blade options. The controller function is integrated into the chassis for maximum space efficiency in remote locations or top-of-rack settings.



Expanded views of the Intellaview 5RU switch



1.5RU | ACI-4010-AC
(Up to 1 blade)



3RU | ACI-4020-AC
(Up to 2 blades)



5RU | ACI-4040-AC
(Up to 4 blades)



9RU | ACI-4080-AC 9RU
(Up to 8 blades)

Fixed Top-Of-Rack Chassis

The Intellaview EdgeSwitch is a cost-efficient and small-footprint solution that organizations of any size can deploy for essential network visibility technology. Whether there is a need to reduce cabling costs, improve traffic aggregation efficiency to security tools, or both, the Intellaview EdgeSwitch scales to meet your business needs.

The Intellaview EdgeSwitch (ACI-4432-EDG-1) is a standalone high-density 1RU switch system with 32 ports of 40G/100G Ethernet capability. For faster data speeds, the **Intellaview 400G EdgeSwitch** (ACI-4532-EDG-1) provides 32 ports of 40G/100G/200G/400G. IT teams can use either version as a standalone or end-of-row solution to enable efficient Traffic Aggregation, Filtering, Load Balancing, Port Tagging, and support advanced functions such as Protocol (Header) Stripping and Packet Slicing.



NEW INTELLAVIEW 32-PORT 400G SWITCH: ACI-4532-EDG-1

Interfaces (Ports)	32 x QSFP-DD ports capable of supporting up to 400G
Breakout Mode	QSFP-DD: - Up to 64 breakout ports of 100G* - Up to 128 breakout ports of 10G/25G/40G/50G*/100G - Up to 256 brekout ports of 10G/25G/50G

INTELLAVIEW 32-PORT 100G EDGESWITCH: ACI-4432-EDG-1

Interfaces (Ports)	32 x SFP28 ports capable of supporting 40G/100G
Breakout Mode	QSFP28: - Up to 128 breakout ports of 10G/25G

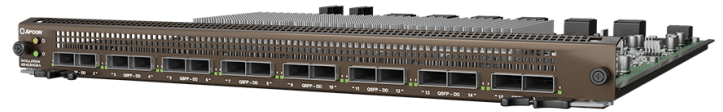
* Requires the use of a QSFP56 Transceiver.

INTELLAVIEW BLADES

Multi-Function Aggregation Blades

APCON assists networks to bridge the gap between 100G and 400G speeds in data centers, or enhance the processing speed, latency, and capabilities of their existing high-speed networks. The **ACI-4130-E28** and **ACI-4130-E16** blades provide a great platform for building 400G high-port-density core switches.

Also, APCON builds blades for speeds ranging from 1G to 100G. The **ACI-4030-E52** blade boasts incredible port density and is ideal for capturing TAP/SPAN traffic. The **ACI-4030-E36** blade has impressive traffic throughput and is capable of performing packet processing with the Advanced Feature Module.

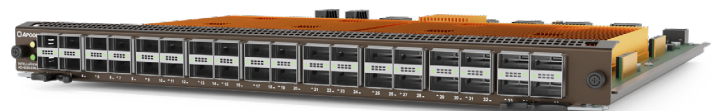
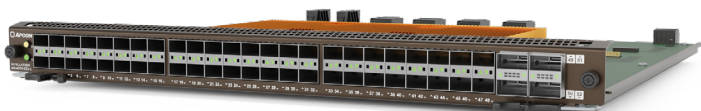


NEW INTELLAVIEW 28-PORT 100G/400G BLADE: ACI-4130-E28

Interfaces (Ports)	24 x QSFP28 ports capable of supporting 40G/100G 4 x QSFP-DD ports capable of supporting up to 400G
Breakout Mode	QSFP28: - Up to 96 breakout ports of 10G/25G QSFP-DD: - Up to 8 breakout ports of 100G* - Up to 16 breakout ports of 10G/25G/40G/50G*/100G - Up to 32 breakout ports of 10G/25G/50G

NEW INTELLAVIEW 16-PORT 400G BLADE: ACI-4130-E16

Interfaces (Ports)	16 x QSFP-DD ports capable of supporting up to 400G
Breakout Mode	QSFP-DD: - Up to 32 breakout ports of 100G - Up to 64 breakout ports of 10G/25G/40G/50G/100G - Up to 128 breakout ports of 10G/25G/50G



INTELLAVIEW 52-PORT 1G/100G BLADE: ACI-4030-E52

Interfaces (Ports)	48 x SFP+ ports capable of supporting 1G/10G/25G 4 x QSFP28 ports capable of supporting 40G/100G
Breakout Mode	QSFP28: - Up to 16 breakout ports of 10G/25G

INTELLAVIEW 36-PORT 40G/100G BLADE: ACI-4030-E36

Interfaces (Ports)	36 x QSFP28 ports capable of supporting 40G/100G
Breakout Mode	QSFP28: - Up to 144 breakout ports of 10G/25G

Advanced-Function Blades

The **IntellaView HyperEngine Blade (ACI-4033)** enables real-time packet processing of 100G network traffic. Use it to prevent tool oversubscription while supporting up to 600G throughput via six 100G packet processing service engines that can run concurrently. Easily aggregate traffic from other blades for processes like Packet Deduplication or Traffic Shaping.

The **IntellaView Optical Bypass Blade (ACI-4034)** can TAP up to six 100G segments. The blade instantly bypasses non-functioning tools, helping IT teams eliminate critical network downtime and improve network security. Custom Heartbeats and heartbeat monitoring help to detect tool failover in milliseconds to highlight the health of security appliances.



INTELLAVIEW HYPERENGINE BLADE: ACI-4033

Processing Power	Up to six 100G service engines Totals up to 600Gbps of concurrent packet processing
Memory	64GB of DDR4 per service engine

INTELLAVIEW OPTICAL BYPASS TAP BLADE: ACI-4034

Network Ports	Six pairs of 40G or 100G ports Fixed Multimode (MPO or LC) or Single mode (LC) connectors (model specific)
Appliance Ports	Six pairs of 40G/100G QSFP28 ports Breakout Mode: Supports up to 24 pairs of 10G/25G ports

Product Overview: IntellaView Blades & EdgeSwitches

The table below shows all IntellaView blade and EdgeSwitch options to compare their specifications, features, and available advanced licenses.

NEW	NEW	NEW	NEW	NEW										
EdgeSwitch 40G	EdgeSwitch 100G	E28-1 Multi-Function Blade	E28-2 Multi-Function Blade	E16-1 Multi-Function Blade	E16-2 Multi-Function Blade	E32 Multi-Function Blade	E36-1 Multi-Function Blade	E36-2 Multi-Function Blade	E36-3 Multi-Function Blade	Optical Bypass Tap Blade	Optical Bypass Tap Blade 40G	HyperEngine Blade (Max 6 Engines)		

Hardware Specifications	SFP Ports									48												
	QSFP28 Ports		32	24	24				4	36	36	36										
	QSFP-DD Ports	32		4	4	16	16															
	Bypass Ports - Pairs																6	6				
	Appliance Ports - Pairs																6	6				
	Processor Throughput (Gbps)					200	200			200	200										100	
	Combined Blade Processing Throughput (Gbps)					400	400					400	400								600 <small>MAX</small>	
Supported Port Speeds	1G																					
	10G																					
	25G																					
	40G																					
	100G																					
	200G																					
	400G																					
Standard Optimization Features	ACL Filtering																					
	Load Balancing																					
	Port Tagging																					
Advanced Optimization Licensed Features	Tunnel Management																					
	Protocol (Header) Stripping																					
	Packet Slicing																					
	Distributed Load Balance Groups																					
	Packet Aware Slicing																					
	Session Aware Slicing																					
	Packet Deduplication																					
	NetFlow Generation																					
	Traffic Shaping																					
	Application Filtering and Intelligence																					
	Application Analytics																					
	Pattern Matching																					

INTELLAVIEW USER INTERFACE

INTUITIVE WEB-BASED GUI FOR NETWORK VISIBILITY

IntellaView Basic:

Single-Switch Management Interface

IntellaView is an easy-to-use Graphical User Interface (GUI) that offers IT teams an easy way to set up, control, and manage their IntellaView blades and chassis. All IntellaView products come with the latest firmware and software of the IntellaView GUI.

IntellaView Advanced:

Expanded Single-Switch Network Visibility

IntellaView Advanced expands upon the capabilities of the IntellaView (GUI) with a wide range of advanced features on a single switch. It includes a customizable dashboard that offers a variety of widgets like: traffic graphs, port statistics, connections, alarm summary, and more. Access to several advanced services is another key advancement. The features listed below can help IT teams to optimize, filter, and gain critical insights into the traffic of interest more effectively.

Advanced Services:

- Protocol (Header) Stripping
 - Packet Slicing
 - Packet Aware Slicing
 - Session Aware Slicing
 - Packet Deduplication
 - NetFlow Generation
 - Tunnel Management
 - Traffic Shaping
 - Pattern Matching
 - Application Filtering*
 - Application Analytics*
- * Requires Additional License

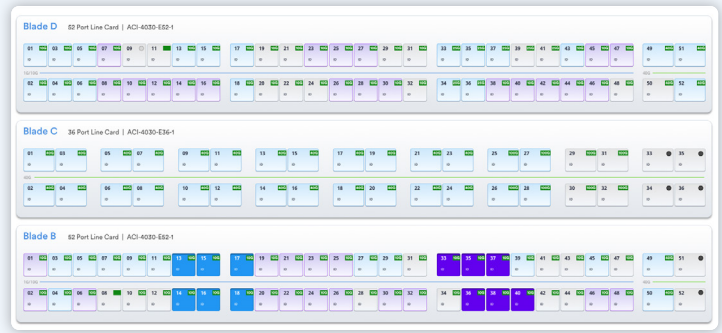
IntellaView Enterprise:

New Multi-Switch Management Software

IntellaView Enterprise is a new graphical user interface (GUI) that allows centralized visibility and management of network switches. With IntellaView Enterprise, you get full control of up to 200 APCON switches. The GUI includes all the features of IntellaView Advanced, but it also offers an improved user experience.

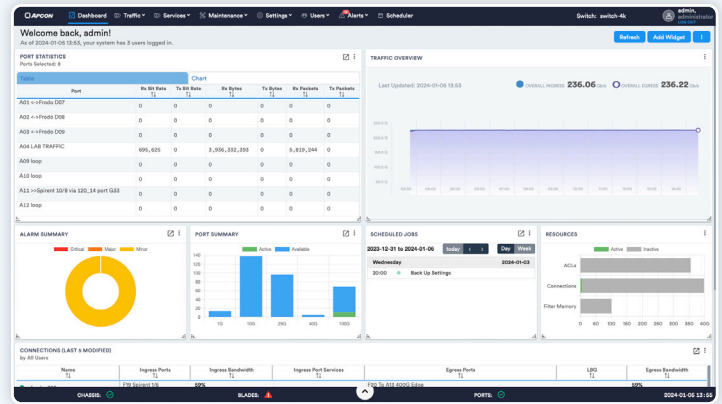
The **new dashboard** is customizable and dynamic, which means it displays information only for the devices selected in the device selection component. Multiple dashboard widgets give you a high-level overview of important statistics and activities and can be arranged according to your preferences.

IntellaView Enterprise has also made further enhancements to the **Connections page**, making it easy and efficient to manage trunks and connections. The **Alerts and Statistics pages** provide quick access to recent events on switches, as well as historical data for up to two years. Repetitive and tedious tasks, such as assigning SSL Certificates or uploading keys and licenses, are now fully automated processes.



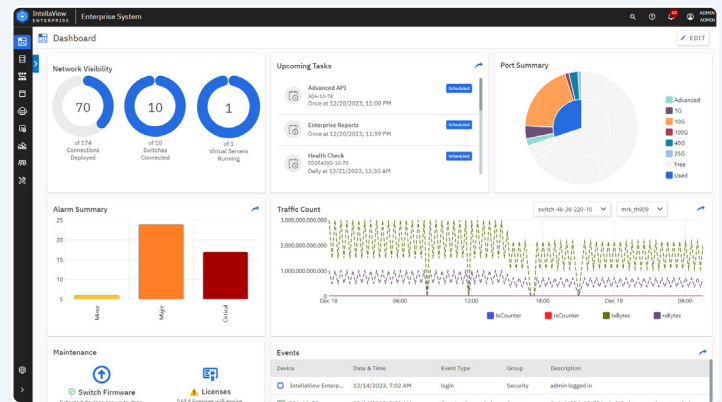
Connections Page

Flexible configuration of traffic connections of the blades



Customized Dashboard (IntellaView Advanced)

Provides widget options to display single switch information



Customizable Dashboard (IntellaView Enterprise)

Widgets display top-level information for multi-switch network visibility

Page search feature is introduced for quicker navigation of the platform and locating specific items on the page.

Last but not least, **IntellaTap-VM** has also received many enhancements. This product provides a magnified visibility of VMware network traffic, by applying virtual traffic capture points in the virtual network. The traffic of interest can be processed on your security tools, enabling them to function at top efficiency. You can compare the capabilities and available features of APCON's three software solutions on the next page.

COMPARING INTELLAVIEW MANAGEMENT SOFTWARE

Features	IntellaView Basic (Technical Support)	IntellaView Advanced (Technical Support)	IntellaView Enterprise (Annual License)
Maximum Managed Switches	1	1	200
Requires Dedicated Server	No (On Switch)	No (On Switch)	Yes
Synchronized Data Among Switches (Settings, Lists, ACLS, ACL Stacks, Load Balance Groups, and more)	✓ (Manual)	✓ (Manual)	✓ (Full)
Statistics Support (Max History)	✓ (Basic – 12 Hours)	✓ (Advanced – 12 Hours)	✓ (Full – 2 Years)
Centralized User Management	✓ (Limited)	✓ (Limited)	✓ (Full)
Cross-Switch Traffic Management	—	—	✓ (Full)
Schedule Tasks On A Switch	—	✓ (Limited)	✓ (Full)
Consolidated Alerts and Events	✓ (Single)	✓ (Single)	✓ (Full)
Generate Reports	—	—	✓
Monitoring Public and Private Cloud	—	—	✓
Switch Platform Support	✓ (IntellaView Only)	✓ (IntellaView Only)	✓ (IntellaView, XR, and XE)
Support For Mobile App	✓	✓	✓
Advanced Services:			
NetFlow Generation	—	✓	✓ (If Licensed On Switch)
Packet Deduplication	—	✓	✓ (If Licensed On Switch)
Header Stripping	—	✓	✓ (If Licensed On Switch)
Tunnel Management	—	✓	✓ (If Licensed On Switch)
Packet Slicing	—	✓	✓ (If Licensed On Switch)
Packet Aware Slicing	—	✓	✓ (If Licensed On Switch)
Distributed Load Balance Group	—	✓	✓ (If Licensed On Switch)
Pattern Matching	—	✓ (Requires HyperEngine)	✓ (If Licensed On Switch)
Traffic Shaping	—	✓ (Requires HyperEngine)	✓ (If Licensed On Switch)
Session Aware Packet Slicing	—	✓ (Requires HyperEngine)	✓ (If Licensed On Switch)
Application Filtering and Intelligence	—	✓+ (Requires HyperEngine)	✓ (If Licensed On Switch)
Application Analytics	—	✓+ (Requires HyperEngine)	✓ (If Licensed On Switch)

— Not Available

✓ Feature Available

✓+ Requires Additional License

