

# IntellaCloud™ for AWS

A blue rectangular box containing white text, overlaid on a background image of a city skyline at night with a glowing blue cloud and network lines.

APCON's Cloud Visibility Solution Provides Greater Security and Visibility for AWS Cloud Environments

## FEATURES

- Scales with Your Elastic Cloud Environment
- Capture and Filter Cloud Network Traffic
- Cloud-Native Microservices Architecture
- Delivery of Traffic to On-Premises or Cloud Endpoints
- Container Visibility and Multi-Region Support
- Reduce Data-Transfer Fees with Packet Slicing

While using a public cloud Infrastructure-as-a-Service (IaaS), it's important to recognize the security implications to an organization's data and applications. AWS, like other public cloud service providers, operates under a **shared responsibility model** where it provides security of the physical data center and leaves the organization responsible for its own security in the cloud. The key challenge for organizations is that traditional security solutions have limited functionality or do not work in a cloud environment.

With APCON's **IntellaCloud for AWS**, global organizations can reduce their exposure to cyber-risk and secure their workloads in cloud environments.

IntellaCloud for AWS is a **cloud-native, microservices-based visibility solution** that captures, optimizes and delivers cloud traffic to anywhere within a hybrid visibility fabric. It provides real-time monitoring of AWS elastic cloud network traffic, significantly increasing the efficiency and effectiveness of security, analytics and performance monitoring tools. Advanced filtering and packet-slicing features optimize mirrored traffic before being forwarded to cloud-based endpoints, increasing tool efficiency and reducing application usage costs of appliances at these endpoints.

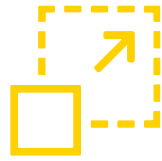


Download a free 90-day trial of **IntellaCloud for AWS** at [apcon.com/IntellaCloud](https://apcon.com/IntellaCloud).



### Gain Visibility and Enhance Security

Capture and monitor network traffic within your public cloud infrastructure.



### Scale with Infrastructure

Elastic monitoring enables IntellaCloud to auto-scale and maintain visibility over any new instances that spin up.



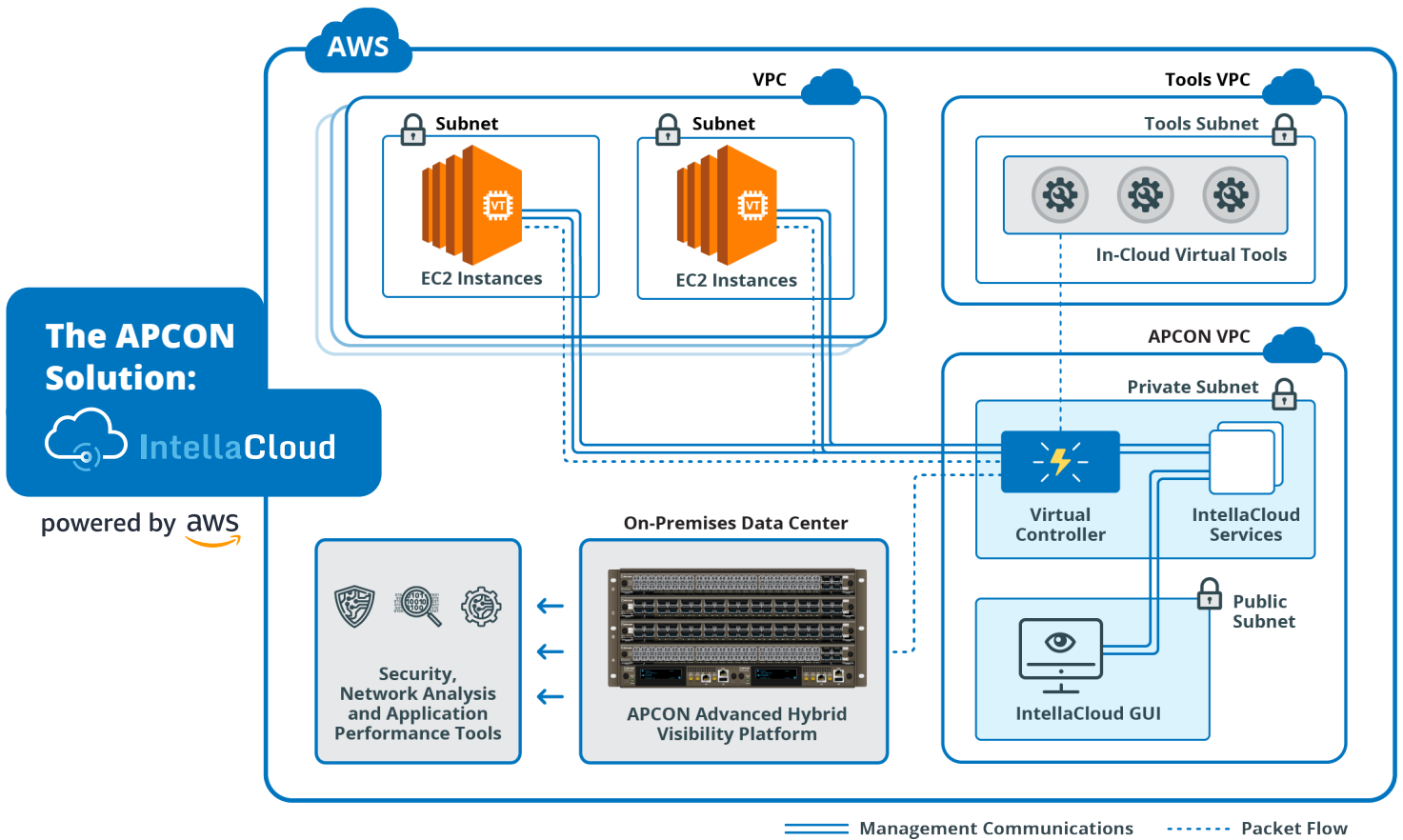
### Deliver Traffic Anywhere

Tunnel cloud traffic to security tools anywhere in your hybrid network: on-premises, virtualized or in the cloud.



### Optimize IT Performance

Replacing multiple security tool agents with one IntellaCloud agent reduces the impact on resources, while filtering and packet slicing improves tool efficiency.



## IntellaCloud Solution Capabilities

### COLLECTION

#### Lightweight Agent

Deployed to each instance to be monitored. The agent can copy all traffic or just look for specific types of traffic, applying filters and performing packet slicing.

### COMMUNICATION

#### Virtual Controller

The virtual controller initiates tunnels and delivers copied traffic to in-cloud or on-premise endpoints for further analysis.

### VISUALIZATION

#### APCON Management Interface

From the user interface, maintain control over your visibility platform and enable elastic monitoring by subnet or tags.

# HIGHLIGHTS

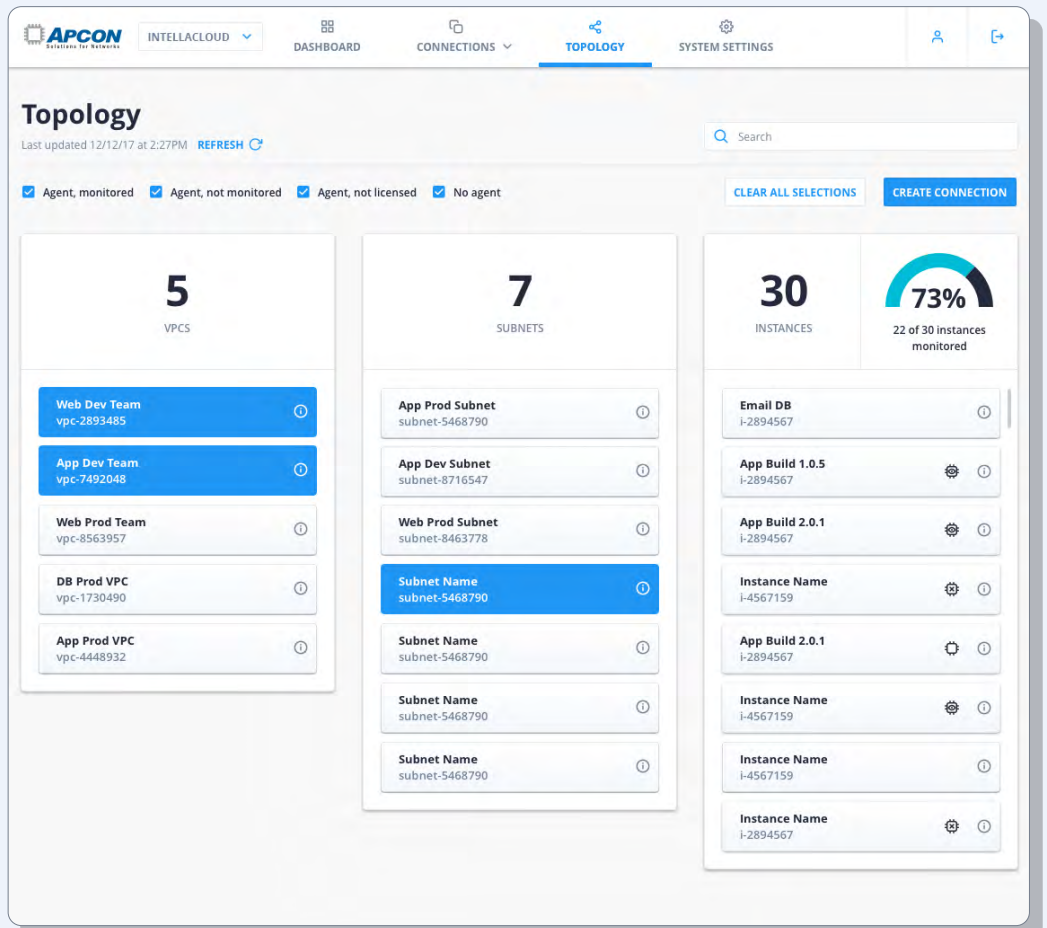
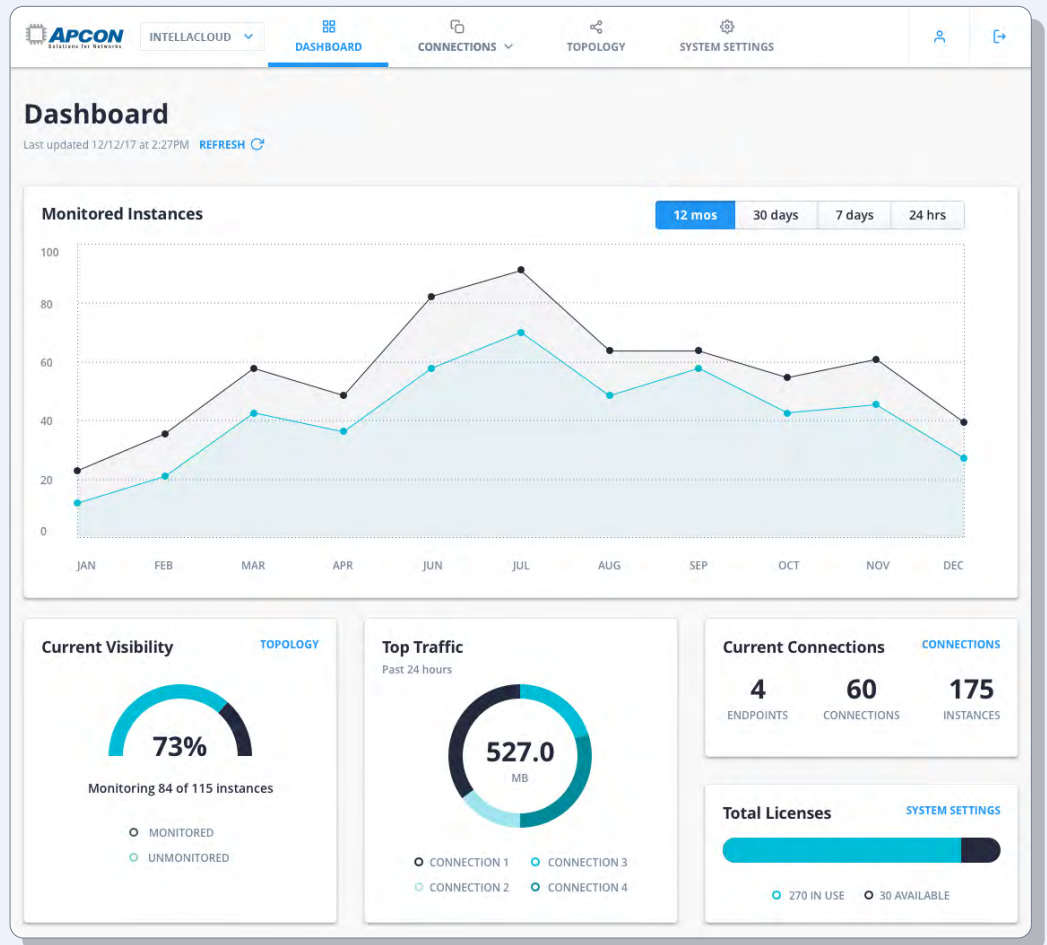
- Comprehensive filtering including source and destination IPs and ports. Send only traffic of interest to your security and performance monitoring tools.
- Packet slicing reduces the usage cost of in-cloud security, analytics, and performance monitoring appliances, and significantly lowers data transfer fees for mirrored traffic packets forwarded to on-premises tools.
- Elastic monitoring enables IntellaCloud to automatically scale up and down with your AWS infrastructure, improving security while having a low maintenance overhead.
- Dynamic discovery of multiple interfaces and containers on an EC2 instance allows real-time monitoring of network traffic including traffic between Docker or other endpoints.

## Dashboard

See your current visibility and top traffic connections at a glance.

## Topology

Create connections through dynamically filtering by VPC, subnet or Instance name.



## Elastic Monitoring

Select all instances by subnet or tag and enable elastic monitoring for an automated visibility that scales up and down as needed.

NAME	ID	IP ADDRESS	SUBNET	AGENT STATUS
engineering_dat...	i-0fad99b6ce04...	10.60.3.157	subnet-06b911e...	Not Monitored
engineering_dat...	i-04e128a6cebd...	10.60.3.210	subnet-06b911e...	Not Monitored
engineering_dat...	i-0d266223e129f...	10.60.3.19	subnet-06b911e...	Not Monitored
engineering_dat...	i-0712fa5f85264...	10.60.3.90	subnet-06b911e...	Not Monitored
engineering_file...	i-074ef313dedba...	10.60.4.61	subnet-0c9a4f8a...	Not Monitored
engineering_file...	i-074087698403e...	10.60.4.80	subnet-0c9a4f8a...	Not Monitored
engineering_file...	i-0b5f84c6fedcbe...	10.60.4.58	subnet-0c9a4f8a...	Not Monitored
engineering_file...	i-0d19a2b33eba8...	10.60.4.220	subnet-0c9a4f8a...	Not Monitored

## IntellicaCloud Specifications

<b>Size of Agent</b>	<ul style="list-style-type: none"><li>• 10MB Disk</li><li>• 500KB RAM</li></ul>
<b>CPU usage</b>	<ul style="list-style-type: none"><li>• Dependent on traffic and applications running.</li></ul>
<b>Deployment</b>	<ul style="list-style-type: none"><li>• Ansible Scripts</li></ul>
<b>Security Features</b>	<ul style="list-style-type: none"><li>• SSH keys</li><li>• HTTPS Encrypted RabbitMQ</li></ul>
<b>Operating Systems</b>	<ul style="list-style-type: none"><li>• Ubuntu 18.04</li><li>• Ubuntu 16.04</li><li>• Amazon Linux 2 (CentOS)</li></ul>

## Part Numbers

<b>ACI-9401-001</b>	IntellicaCloud 125,000 Instance-Hours
<b>ACI-9401-002</b>	IntellicaCloud 250,000 Instance-Hours
<b>ACI-9401-003</b>	IntellicaCloud 500,000 Instance-Hours
<b>ACI-9401-004</b>	IntellicaCloud 1,000,000 Instance-Hours
<b>ACI-9401-005</b>	IntellicaCloud 1,250,000 Instance-Hours
<b>ACI-9401-006</b>	IntellicaCloud 2,500,000 Instance-Hours
<b>ACI-9401-007</b>	IntellicaCloud 5,000,000 Instance-Hours
<b>ACI-9401-008</b>	IntellicaCloud 10,000,000 Instance-Hours

The above software applications are usage-based and are available for a 12-month period.