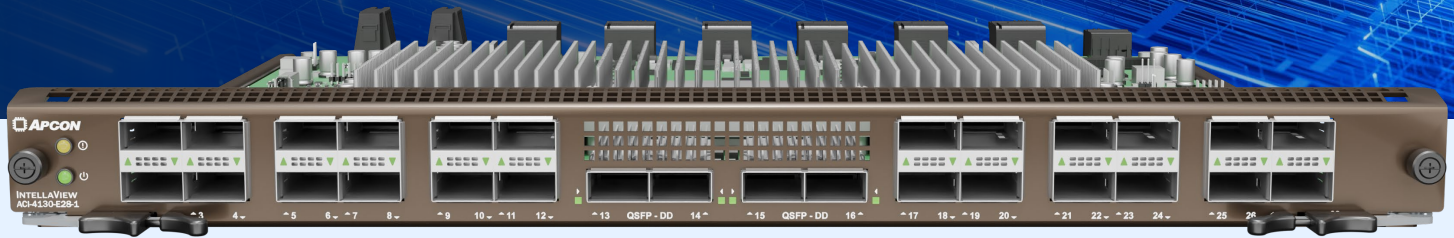




PRODUCT OVERVIEW

ADVANCED TRAFFIC MONITORING AT 200G/400G

IntellaView 400G 28-Port Multi-Function Blade



AWESOME PERFORMANCE

High-Speed Aggregation: Transmit 400G traffic — with 4 QSFP-DD ports, or reduce traffic latency with 24 QSFP ports of up to 200G.

Improved Connectivity: New board architecture and chipset allow for better port-to-port data throughput

POWERFUL PACKET PROCESSING MODULES

Advanced Feature Module: Supports packet processing at up to 400G speeds, helping to reduce the workload of network tools that provide security and analysis.

Enhanced Feature Module: Supports concurrent Packet Deduplication and NetFlow Generation features at 200G speeds, allowing for greater insight into the network traffic.

HELPING NETWORKS TRANSITION INTO THE FUTURE OF 400G SPEEDS

The **IntellaView 28-port multi-function blade** is designed to meet the demands of modern, high-performance networks. This innovative blade seamlessly blends APCON's industry-leading packet aggregation and intelligent filtering with powerful, advanced packet processing capabilities. Network engineers can now access real-time traffic

insights, empowering them to swiftly detect, investigate, and neutralize security threats with precision. Stay ahead of evolving risks and ensure the integrity of your network infrastructure with the IntellaView blade — where speed, security, and scalability converge.

IMPRESSIVE BLADE-FUNCTION VERSATILITY TO MEET YOUR NEEDS

Designed for adaptability and efficiency, APCON's blade configurations ensure a perfect fit for varying operational demands, enhancing network performance and scalability.

The **IntellaView ACI-4130-E28-1 blade** includes four ports of 40G/100G/200G/400G QSFP-DD Ethernet and 24 ports of 40G/100G/200G* QSFP Ethernet.

- **High-speed ports** allow for precise real-time network traffic monitoring with unimpeded communication between all ports
- **Standard features:** ACL Filtering, Port Tagging, and Load Balancing
- **Advanced Features:** Protocol (Header) Stripping, Tunnel Management, and Packet Slicing — at full rate.

The **IntellaView ACI-4130-E28-2 blade** adds an Advanced Feature Module to the original ACI-4130-E28-1 blade model.

- This module enables Packet-Aware Slicing, Packet Deduplication, and Distributed Load Balance Groups while maintaining up to 400G of throughput.

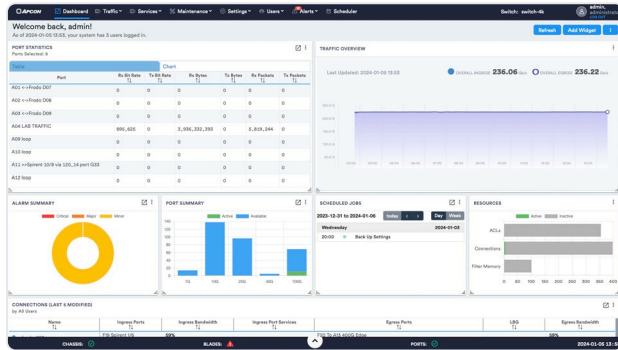
Lastly, the **IntellaView ACI-4130-E28-3 blade** adds our Enhanced Feature Module to the original blade model.

- This model provides up to 200G of processing power for Packet Deduplication and NetFlow Generation, allowing services to run separately or consecutively. This capability can help extend the lifespan of network tools and enhance overall network visibility.

TRAFFIC SPEED VERSATILITY FOR BETTER MONITORING

APCON delivers perfect integration of all IntellaView blades and slotted chassis. Whether you have a simple or a complex network environment, it is beneficial to incorporate a high-performance 400G core-switch to monitor traffic of interest at various speeds.

Further, the ACI-4130-E28 blade's 28 ports support breakout mode to ensure effortless compatibility with both cutting-edge and legacy security appliances.



IntellaView Advanced GUI Dashboard

SIMPLIFIED SWITCH CONTROL

IntellaView ACI-4130-E28 blades are controlled through the intuitive, pre-installed, web-based IntellaView interface, accessible directly from the switch. This streamlined platform is the control center for all IntellaView solutions, offering robust features such as:

- Easy setup of port aggregations, port tagging, load balancing, and ingress port filters
- Visual displays for port statistics
- System views and alerts
- Easy installation of software upgrades
- For efficient multi-switch management, use IntellaView Enterprise

FUTUREPROOF DATA CENTER GROWTH

IntellaView Enterprise, APCON's all-encompassing, multi-switch software, streamlines the management of up to 200 APCON switches from one centralized platform. Key benefits include:

- Effortless control over switch configurations, alerts, connections, trunks, and maintenance
- Monitoring of virtual traffic with IntellaTap-VM
- Comprehensive traffic data collection and visualization for up to two years
- Automated traffic routing with PathFinder



40G/100G Blades
ACI-4030-E36

100G/200G/400G Blades
ACI-4130-E28

200G/400G Blades
ACI-4130-E16

The IntellaView ACI-4130-E28 blades can easily aggregate and optimize raw 100G and 400G traffic from network sources, and feed your network management tools with high-quality data to keep your network secure.

ACI-4130-E28 BLADE SPECIFICATIONS

- Interface (Ports)** 4 QSFP-DD ports of 40G/100G/200G/400G
Breakout Modes:
- 2 x 100G (Max: 8 breakout ports)
 - 4 x 10G/25G/50G/100G (Max: 16 breakout ports)
 - 8 x 10G/25G/50G (Max: 32 breakout ports)
- 24 QSFP ports of 40G/100G/200G***
Breakout Modes:
- 2 x 100G (Max: 48 breakout ports)
 - 4 x 10G/25G/50G (Max: 96 breakout ports)

Packet Processing Services

- ACI-4130-E28-1 IntellaView 28-Port Blade**
Standard Services: ACL Filtering, Port Tagging
Advanced Services: Protocol (Header) Stripping, Tunnel Management, Packet Slicing
- ACI-4130-E28-2 IntellaView 28-Port Blade with Advanced Feature Module (400G throughput)**
Standard Services: ACL Filtering, Port Tagging
Advanced Services: Protocol (Header) Stripping, Tunnel Management, Packet Slicing, Packet Deduplication, Packet-Aware Slicing, Distributed LBG
Services that can be combined on this blade:
- Packet Deduplication/Packet-Aware Slicing
 - Distributed LBG/Deduplication
 - Distributed LBG/Packet-Aware Slicing
 - Distributed LBG/Deduplication/Packet-Aware Slicing
- ACI-4130-E28-3 IntellaView 28-Port Blade with Enhanced Feature Module (200G throughput)**
Standard Services: ACL Filtering, Port Tagging
Advanced Services: Protocol (Header) Stripping, Tunnel Management, Packet Slicing, Packet Deduplication, NetFlow Generation
Services that can be combined on this blade:
- Packet Deduplication/NetFlow Generation

* Available with the use of QSFP56

