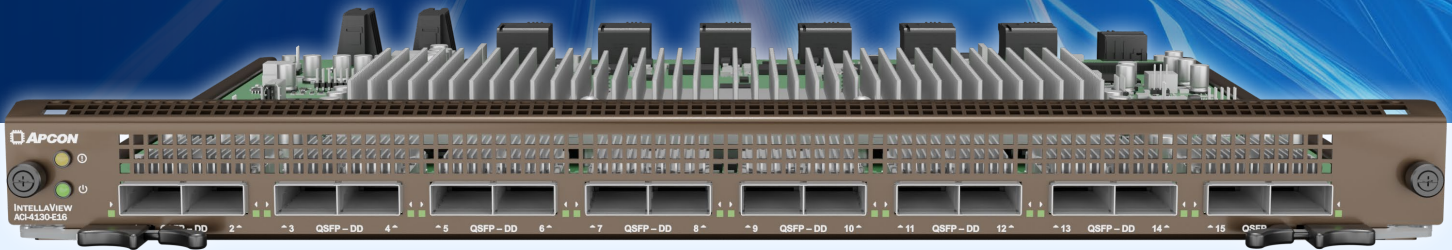




PRODUCT OVERVIEW

MONITOR HIGH-VOLUME AI TRAFFIC WITH 400G SPEEDS

IntellaView 400G 16-Port Multi-Function Blade



AMAZING PERFORMANCE

Ultra-Fast Aggregation: Transmit 400G traffic — or reduce traffic latency — with 16 QSFP-DD ports.

Improved Connectivity: New board architecture and chipset allow for better port-to-port data throughput

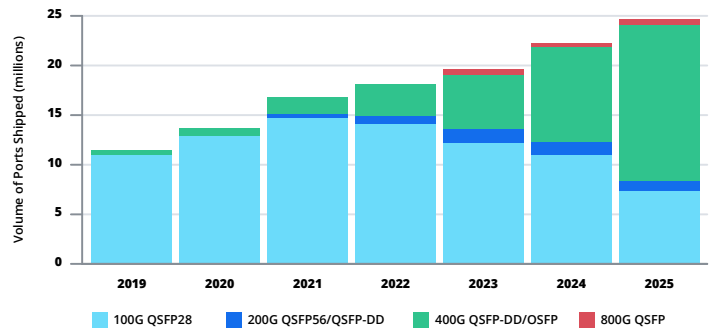
IMPRESSIVE TRAFFIC OPTIMIZATION & INSIGHT

Advanced Feature Module: Supports packet processing at up to 400G speeds, helping to reduce the workload of network tools that provide security and analysis.

Enhanced Feature Module: Supports concurrent Packet Deduplication and NetFlow Generation features at 200G speeds, allowing for greater insight into the network traffic.

ULTRA-HIGH-SPEED TRAFFIC MONITORING

The rapid adoption of artificial intelligence (AI) requires that visibility and monitoring equipment address the increasing volume and higher speeds of network traffic. To accommodate AI-driven applications and enhance network responsiveness, traditional data centers running at 1G, 10G, 40G, and 100G are actively adding 400G line rates as shown by the growth of the green bars on the right.



Statistics from www.fs.com

DYNAMIC BLADE FUNCTIONALITY

The IntellaView platform gives IT teams more choices by offering three versions of this 16-port multi-function blade.

The IntellaView ACI-4130-E16-1 blade features 16 QSFP-DD ports supporting 40G, 100G, 200G, and 400G Ethernet rates.

- **Faster ports** allow higher-volume data processing to reduce dropped packets and optimize storage capacities for security and monitoring tools.
- **Standard features:** ACL Filtering, Port Tagging, and Load Balancing
- **Advanced Features:** Protocol (Header) Stripping, Tunnel Management, and Packet Slicing operate at full line rate.

The **IntellaView ACI-4130-E16-2 blade** adds an Advanced Feature Module to the original ACI-4130-E16-1 blade model.

- This module enables Packet-Aware Slicing, Packet Deduplication, and Distributed Load Balance Groups, all while maintaining up to 400G of throughput.

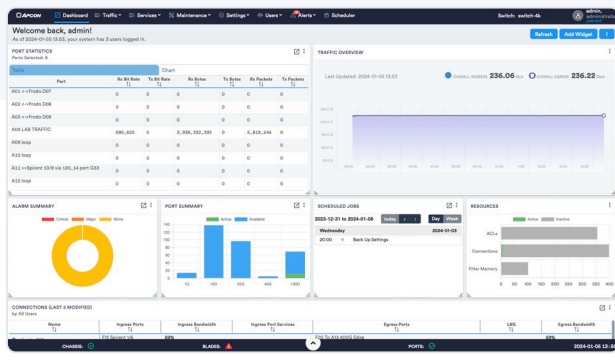
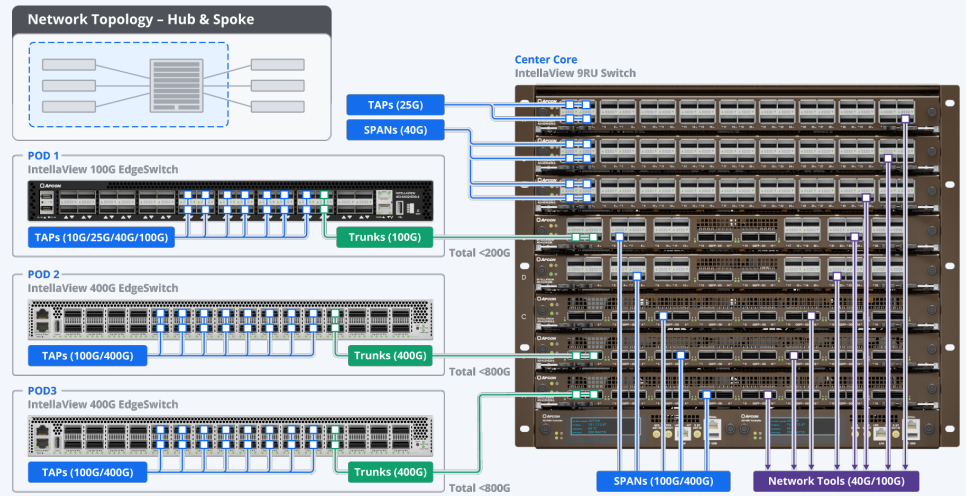
Similarly, the **IntellaView ACI-4130-E16-3 blade** adds an Enhanced Feature Module to the original blade model.

- This model provides up to 200G of processing power for Packet Deduplication and NetFlow Generation, allowing services to run separately or consecutively. This capability can help extend the lifespan of network tools and enhance overall network visibility.

A POWERHOUSE CHASSIS THAT IS RIGHT FOR YOU

All IntelliView blades are compatible with any IntelliView slotted chassis. If deployed in a Hub & Spoke topology, many traffic sources and destinations can be connected to a centralized 400G, high-port-density core switch featuring the ACI-4130-E16 blades.

APCON understands that some security appliances will likely be oversubscribed at 400G, thus all 16 ports provide the flexibility to use breakout mode at slower rates to be more compatible with modern and legacy appliances.



IntelliView Advanced Dashboard Screen

BUILT-IN SWITCH MANAGEMENT

IntelliView ACI-4130-E16 blades are managed with the pre-loaded, web-based IntelliView GUI from the switch, which is the same interface used to manage all IntelliView products with features including:

- Easy setup of port aggregations, port tagging, load balancing, and ingress port filters
- Gather and visualize data and statistics
- Get system-wide alerts and gain remote access through the IntelliView Mobile App

CENTRALIZED VISIBILITY SOLUTION

To manage up to 200 APCON switches from a single centralized device, users can upgrade to our latest multi-switch software — **IntelliView Enterprise**.

- Easy management of switch settings, alerts, connections, trunks, and maintenance tasks
- Gain visibility into VM traffic with IntellaTap-VM
- Gather & visualize traffic statistics (two years)
- Automatically find the best path to route traffic with Path Finder

The **IntelliView ACI-4130-E16** blades within an IntelliView 9RU chassis create a port-dense core switch capable of receiving 400G traffic from sources like the IntelliView 400G EdgeSwitch for processing and distributing traffic to tools.

ACI-4130-E16 SPECIFICATIONS

Interface (Ports) 16 QSFP-DD ports of 40G/100G/200G/400G

Breakout Modes:

- 2 x 100G (Max: 32 breakout ports)
- 4 x 10G/25G/50G/100G (Max: 64 breakout ports)
- 8 x 10G/25G/50G (Max: 128 breakout ports)

Packet Processing Services

ACI-4130-E16-1 IntelliView 16-Port Blade

Basic Services: ACL Filtering, Port Tagging

Advanced Services: Protocol (Header) Stripping, Tunnel Management, Packet Slicing

ACI-4130-E16-2 IntelliView 16-Port Blade w/ Advanced Feature Module (up to 400G combined throughput)

Advanced Services: Protocol (Header) Stripping, Tunnel Management, Packet Slicing, Packet Deduplication, Packet-Aware Slicing, Distributed LBG

Service combinations available on this blade:

- Packet Deduplication/Packet-Aware Slicing
- Distributed LBG/Deduplication
- Distributed LBG/Packet-Aware Slicing
- Distributed LBG/Deduplication/Packet-Aware Slicing

ACI-4130-E16-3 IntelliView 16-Port Blade w/ Enhanced Feature Module (up to 200G throughput)

Advanced Services: Protocol (Header) Stripping, Tunnel Management, Packet Slicing, Packet Deduplication, NetFlow Generation

Service combinations available on this blade:

- Packet Deduplication/NetFlow Generation separately or consecutively



APCON, Inc. • 9255 SW Pioneer Court, Wilsonville, Oregon 97070

+1 503-682-4050 • 1-800-624-6808 • @APCON • company/APCON • apcon.com

© 2024 APCON, Inc. All Rights Reserved. APCON is a registered trademark of APCON, Inc.

Asset: 23020
Updated: 11/24